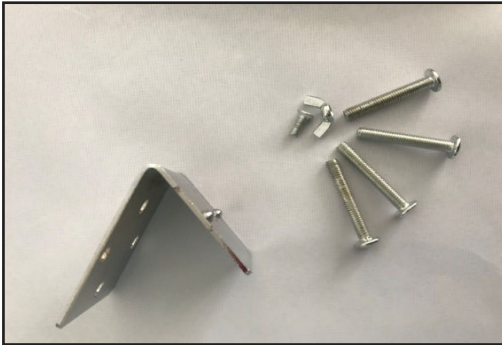


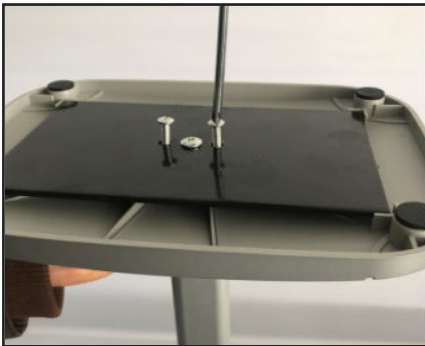
## 91766 ACRYLIC BROCHURE HOLDER - ASSEMBLY INSTRUCTIONS



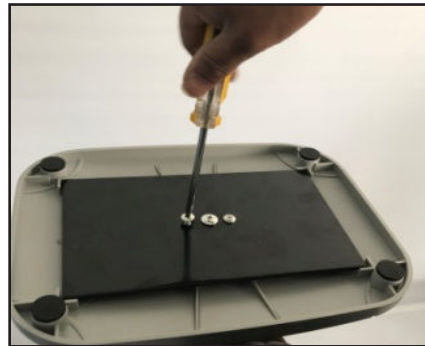
### 1 Prepare all accessories:

1x Aluminium pole  
1x Acrylic holder

1x Base (steel base and plastic cover)  
1x Steel holding  
6x Screws (4 long screws, 1 short screw and 1 wing nut)



### 2 Install base and pole with two screws with screwdriver



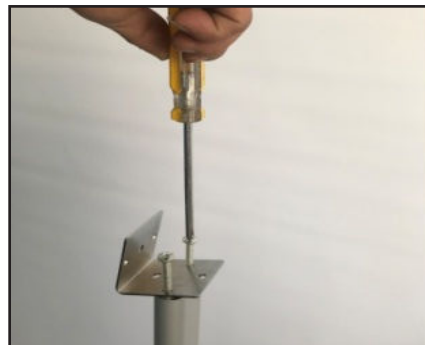
Make sure to use two longer screws from the steel base.  
Please make sure the black metal base is setted



in the plastic cover before installing the pole with screws.



### 3 Install steel holding for connecting pole and acrylic holder



Using the two long screws through steel holding to pole groove and take screwdrivers to fit them in tight.



### 4 Fitting the small screw through out the acrylic holder hole



Connect the acrylic holder and steel holding together using the small screws.  
Then rotating the wing nut on the opposite to



make sure it is screw tight.