

Glass Display Counters C2-400-LED



Features

1200mm (w) x 400mm (d) x 900mm (h)

- ✓ **Fully assembled, includes wheels**
- ✓ **4 side LED strip lights and 4 LED spot lights**
- ✓ **2 toughened glass shelves**
- ✓ **Lockable sliding doors**
- ✓ **Top safety glass secured against theft of products**
- ✓ **Made from toughened glass**
- ✓ **Brushed aluminium finish**
- ✓ **Available in Silver or Black**

Warranty

- 1 year parts only warranty for locks and shelf holders*
- 1 year on-site warranty for other electrical faults including internal switch or lighting**

*A replacement part will be shipped to you for self-fitting.

**An engineer will be on-site within 10 working days. If the engineer cannot fix the cabinet on-site then a replacement cabinet will be provided within a further 7 working days – subject to stock. If the fault is found to be due to a scenario which could have been easily rectified, a charge will apply. For example: a blown fuse. Mainland UK only.

Delivery and collection options

View our full range at www.accessdisplays.co.uk or call us on 01793 613088 for more information

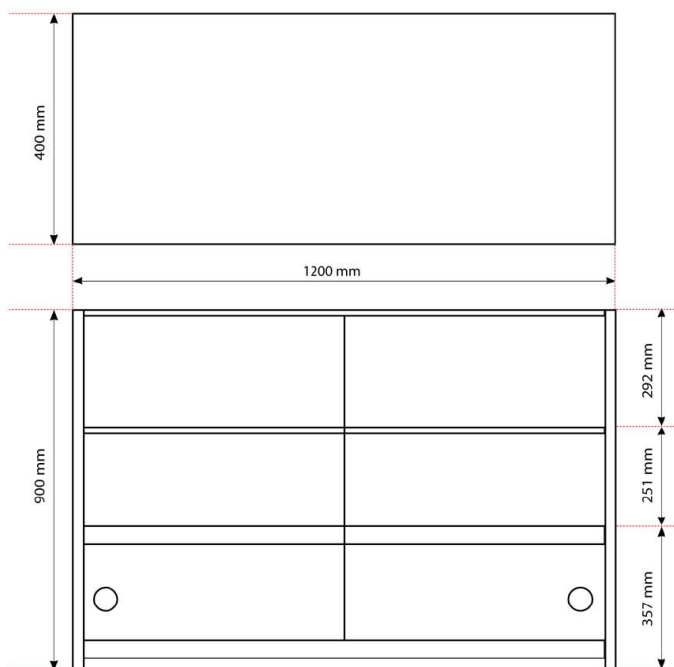
We are continually improving and modifying our product range and reserve the right to vary the specifications without prior notice. All dimensions and weights quoted are approximate and we accept no responsibility for variance.

Glass Display Counters C2-400-LED

All delivery pricing listed is based on a single cabinet delivered to UK mainland. Should you wish the delivery to take place outside these areas please call us for a quote.

Collection - From our warehouse in Maidenhead, UK

All collections must be arranged with us prior to your visit to our Maidenhead warehouse and is subject to stock. These cabinets are fully assembled and as such a suitable vehicle or courier will be required.



Delivery - Kerbside

The cabinet(s) will be delivered fully assembled and put by your front door in their packaging, all that is then required is for you to un-pack and position the cabinet(s). Given the weight of these products we strongly suggest that there are at least two people available to move the cabinet(s).

Delivery - Installation

A 2 person installation team will deliver your cabinet(s) and take it into the ground floor of your premises. The cabinet(s) will then be unpacked and all the packaging will be taken away. If you require the cabinet to be positioned on another floor we can do this for an additional charge. Please call us for further details.

View our full range at www.accessdisplays.co.uk or call us on 01793 613088 for more information

We are continually improving and modifying our product range and reserve the right to vary the specifications without prior notice. All dimensions and weights quoted are approximate and we accept no responsibility for variance.